

EXTENSION MODULES FOR A210-A230S MODEL MM/COM20X

SPECIFICATIONS and DIMENSIONS

MM/COM201



Modbus, data logger,
RS232/485 interface,
synchronizing input

5 YEAR WARRANTY



Protocol Modbus RTU for SCADA
Interface RS232/485, switchable
Synchronizing input synchronizing interval or tariff switching
Baud rate 1200, 2400, 4800, 9600, 19200

Data logger with A210

P_{int} avg. active power values (incoming/outgoing)
 Q_{in} avg. active power values (IND/CAP)

Data logger with A230/A230s

P_{int} avg. active power values (incoming/outgoing)
 Q_{int} avg. reactive power values (incoming/outgoing) or IND/CAP
 S_{in} avg. apparent power values and 9 additional free programming average values

Amount of data

1 value 166 days
2 values 83 days
14 values 12 days

MM/COM202



2 Analog Outputs

5 YEAR WARRANTY



Input values

A210 U, I, I_{avg} , I_n , P, Q, S, F, $\cos \Phi$
A230 (in addition to above) zero-displacement voltage,
asymmetric voltage,
THD U, THD I,
Voltage, Current Avg. value

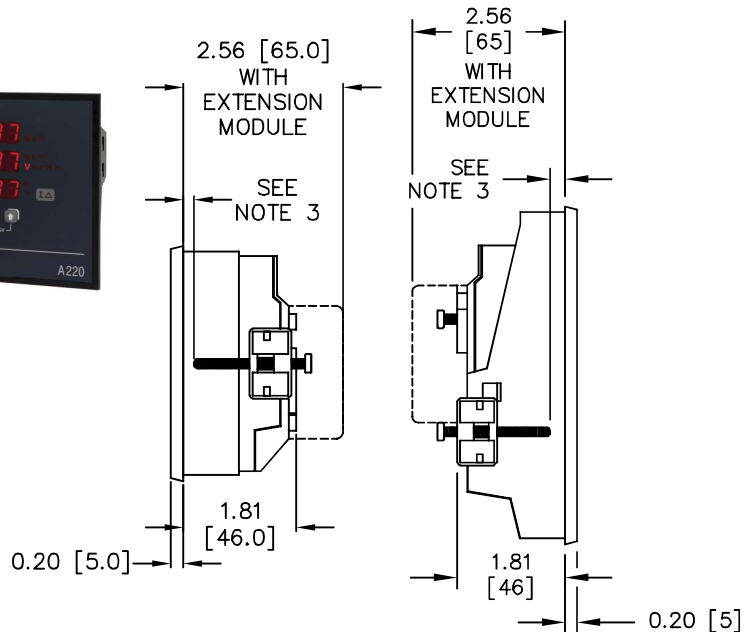
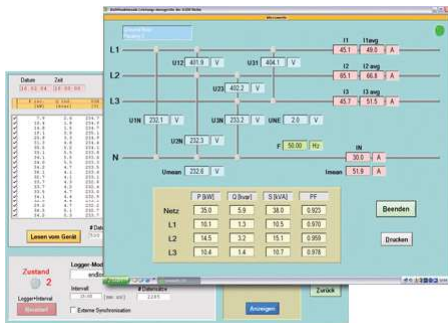
Output 0-20mA, 4-20mA, inverting

Limitation min 0/3.7mA, resp.
max 21mA

Burden voltage 8V

Accuracy 0.1% (without A2xx)

Number of channels 2, electrically-isolated



For reading & selection of values,
optional A200plus Software is
available at no additional cost.

NOTES:

1. All dimensions in inches [mm].
2. Panel cut-out: 5.43 +0.03/-0.00 [138 +0.8/-0.0] x 5.43 +0.03/-0.00 [138 +0.8/-0.0]
3. Panel dimensions (thickness, min/max): 0.08-1.00 [2-25.4]
4. Refer to Operating Instructions manual for details on attaching extension modules.

Dwg# 0902-00594-B Rev --

Dwg# 0902-00661-B Rev --



OhioSemitronics, Inc.
What Can We Measure for You?

WWW.OHIOSEMITRONICS.COM

4242 Reynolds Drive
Hilliard, Ohio 43026-1264

TELEPHONE: 614-777-1005

TOLL FREE: 1-800-537-6732

FAX: 614-777-4511